

Shown in Elevation A



Seaside



KENSINGTON

3012 sq. ft.

4 Bedrooms | 2.5 Bathrooms

Optional basement development - 1060 sq. ft.

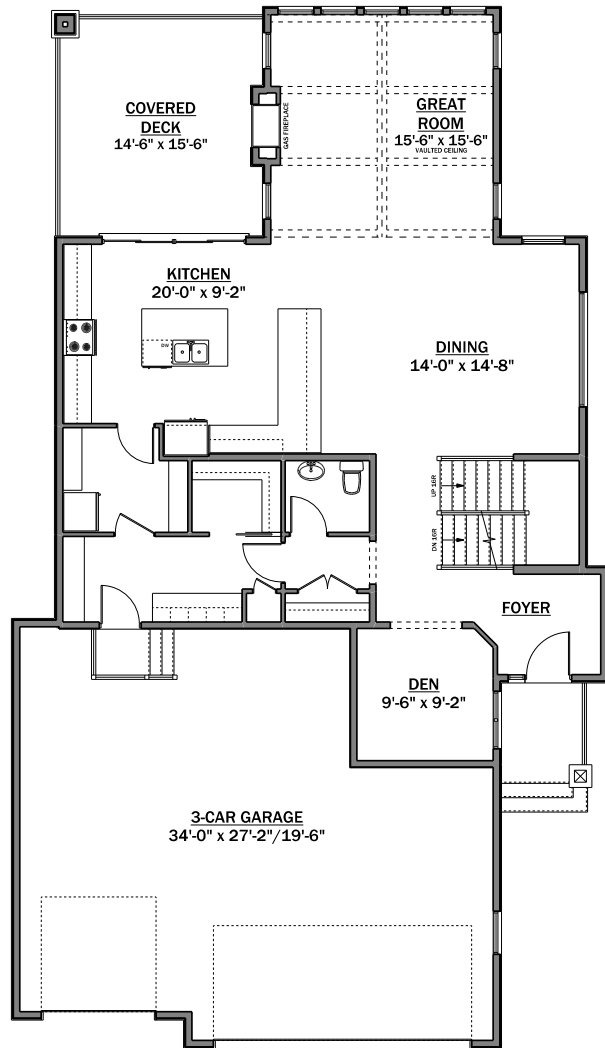
House width: 40 ft

House length: 72-6 ft

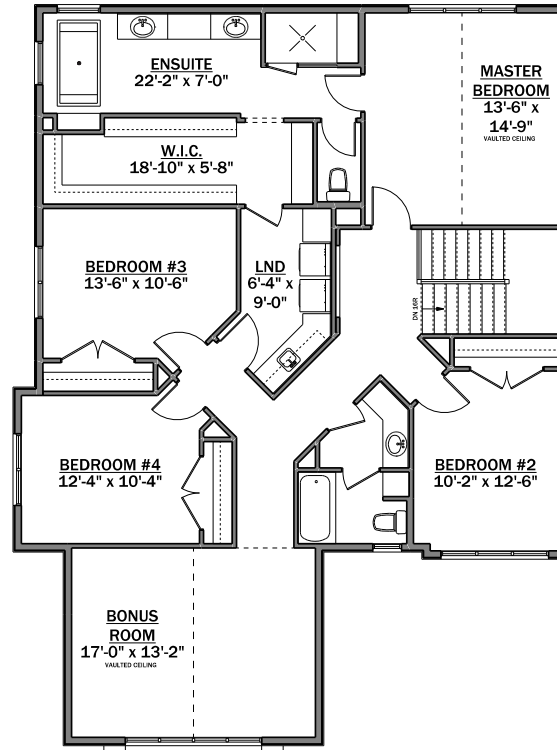
Stepping through the grand front door, you'll encounter a foyer with generous closet space and a den perfect for a home office. The kitchen boasts ample counter space with an oversized island and casual eating bar. The dining area flows seamlessly off this space, making it an ideal area to host family get togethers. Wander into the vaulted great room and you'll be drawn to the stunning, double-sided fireplace that can also be enjoyed as you lounge on your spacious, covered deck.

Explore further on the upper floor and you'll find three additional bedrooms and a family lounge accented by a vaulted ceiling. The master retreat offers homeowners an expansive walk-through closet which leads into the laundry room. Step into the spa-like ensuite with his-and-hers vanities, a custom tiled shower and a freestanding tub.

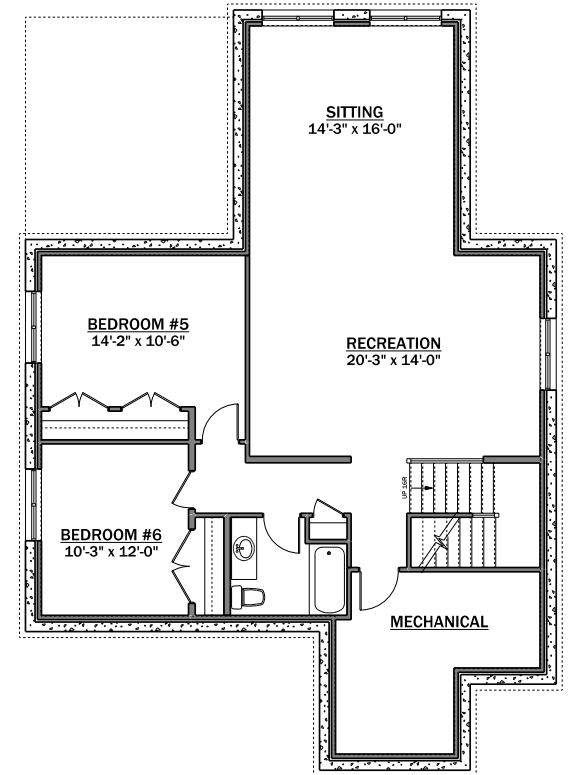
The possibilities for the basement development of this home include additional bedrooms, a full bathroom and casual entertaining or recreation space.



MAIN FLOOR
1411 sq. ft.



UPPER FLOOR
1601 sq. ft.



OPTIONAL BASEMENT
DEVELOPMENT
1060 sq. ft.